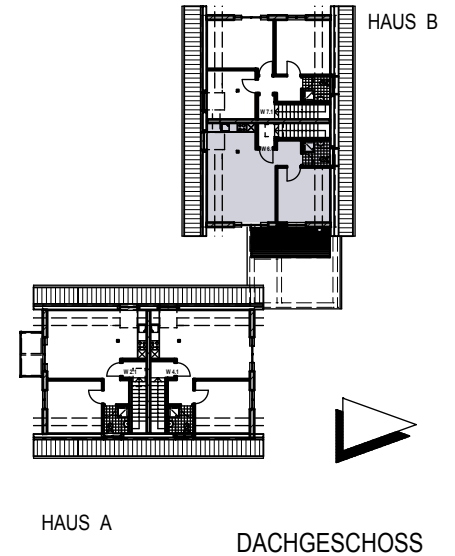
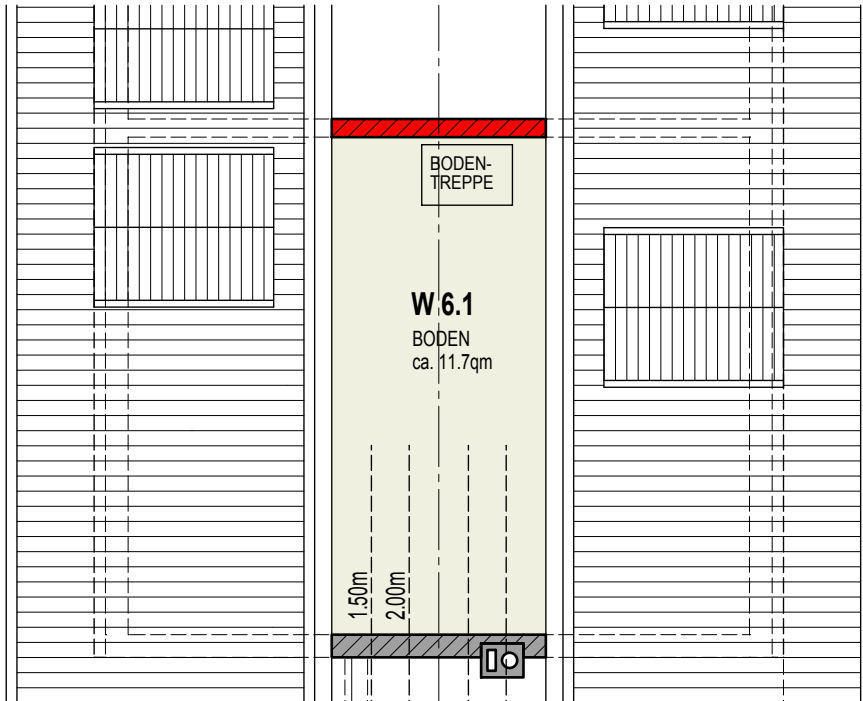


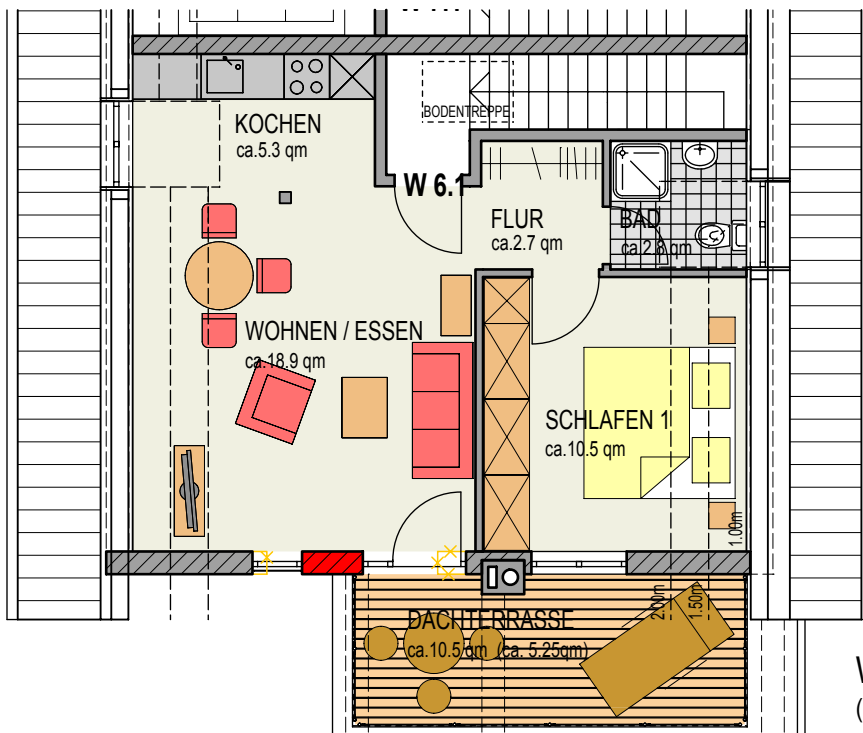
" FERIEWOHNUNGEN AM FELDRAIN "

18556 BREEGE / RÜGEN



BODEN

DACHGESCHOSS



WOHNUNG 6.1 = ca. 44.8 qm  
(+ BODEN ca. 11.7qm)



BREEGER IMMOBILIEN GMBH  
KLAUSDORFER STR. 156  
24161 ALTENHOLZ

**KRUSE** - ARCHITEKTEN  
- BERATUNG - PLANUNG - BAULEITUNG -  
STEINFURTER WEG 7, 24113 KIEL  
TEL. 0431/ 64 73 77  
FAX 0431/ 64 73 7 66